



Hydrographic Emergency Response

China MSA

CONTENTS

Hydrographic Emergency System

Hydrographic Emergency Cases

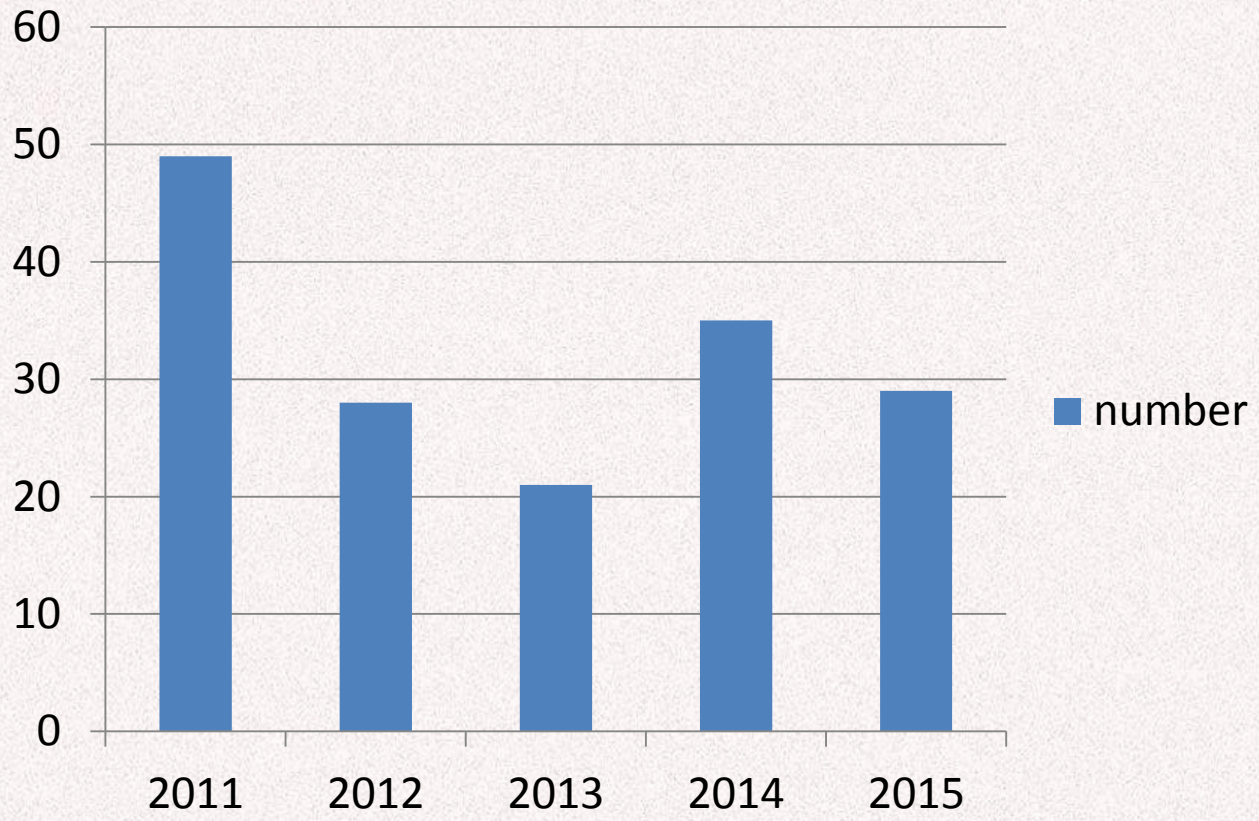
International Cooperation

Planning

Hydrographic Emergency System

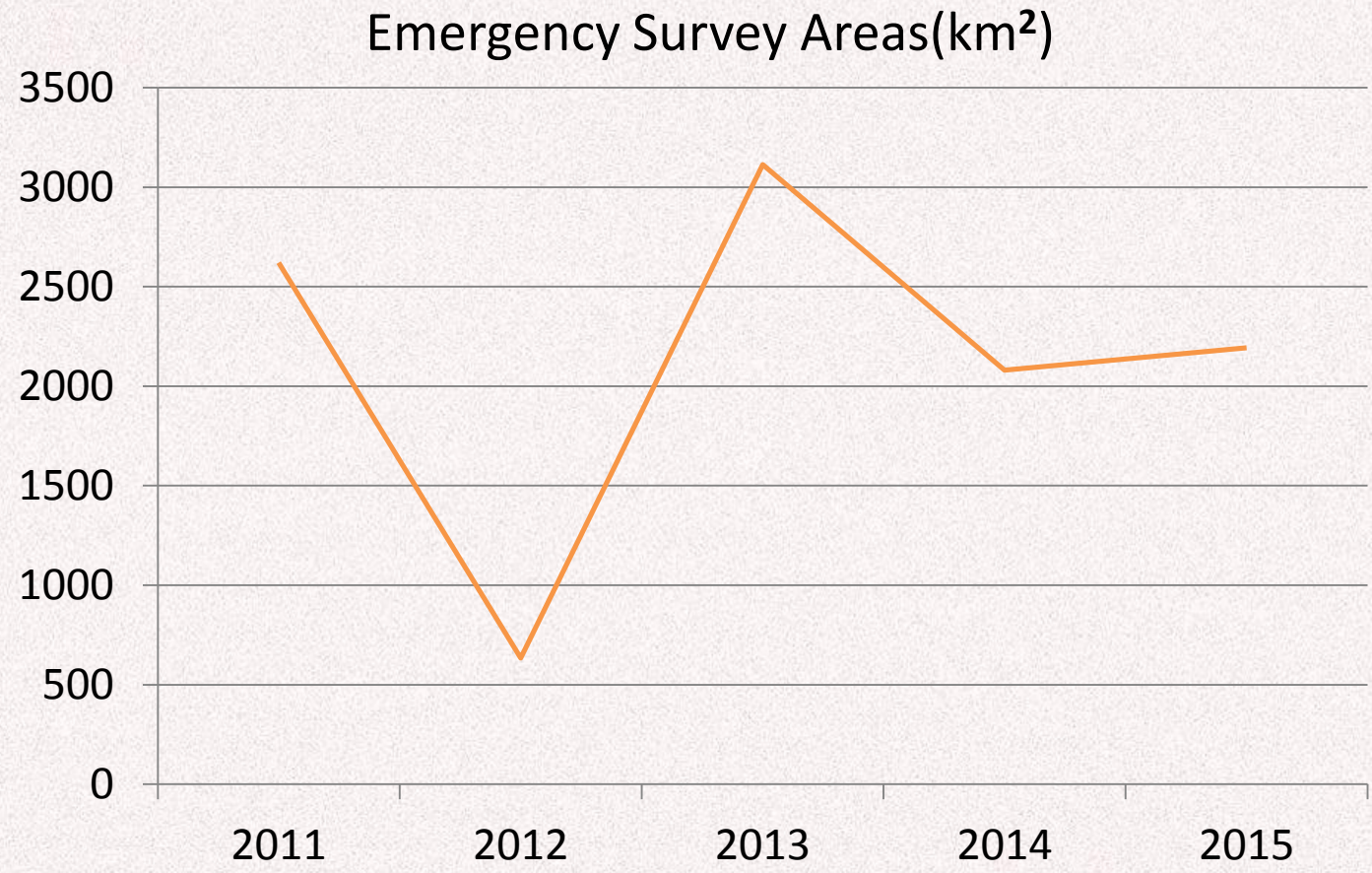
China MSA always attached importance to capacity building on emergency services, and took active part in emergency survey. An emergency management and operation system with standardized troops and equipment has been established. From 2011 to 2015, the hydrographic team of “excellently equipped, highly trained and exquisitely skilled” conducted 162 emergency surveys, which played an important role in safeguarding people's lives and property.

Emergency Surveying Statistic



Number of Emergency Survey Accidents (2011-2015)

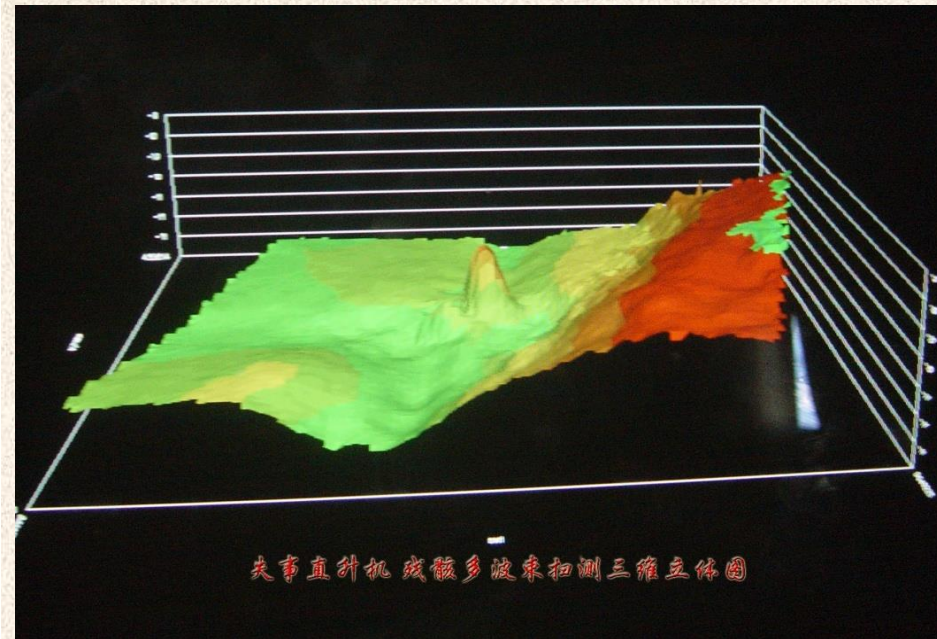
Emergency Surveying Statistic



Hydrographic Emergency Cases

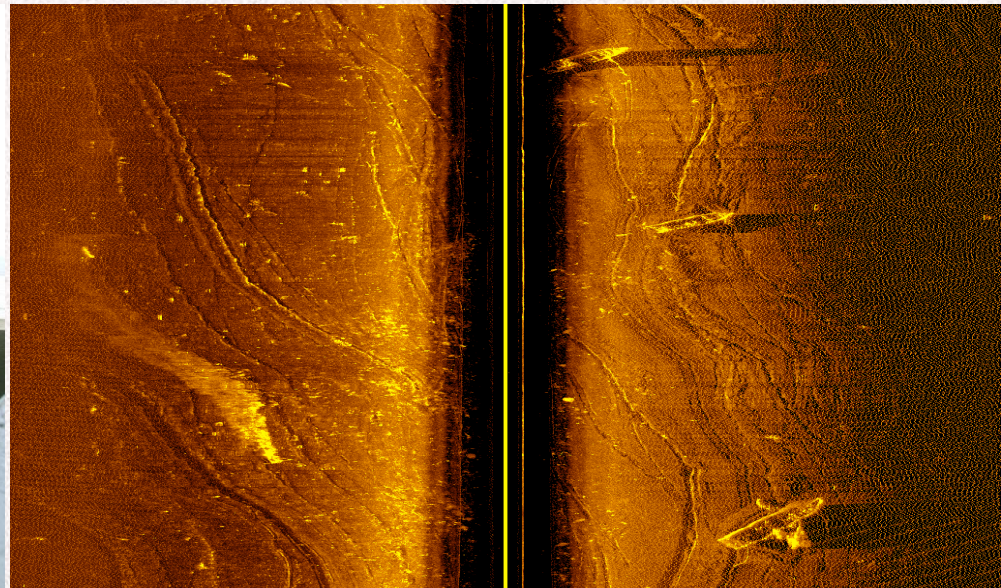


In June, 2003, Fuling, Chongqing ferry sank, more than 50 people dead and missing. China MSA immediately set up an emergency team composed of 6 backbone after receiving instructions. With side scan sonar and magnetic detector, GPS satellite positioning and other 7 sets of advanced sweep survey equipment, the emergency team rushed to the accident site within 24 hours. After 4 days of surveying and analysis, position of the wreck was determined.



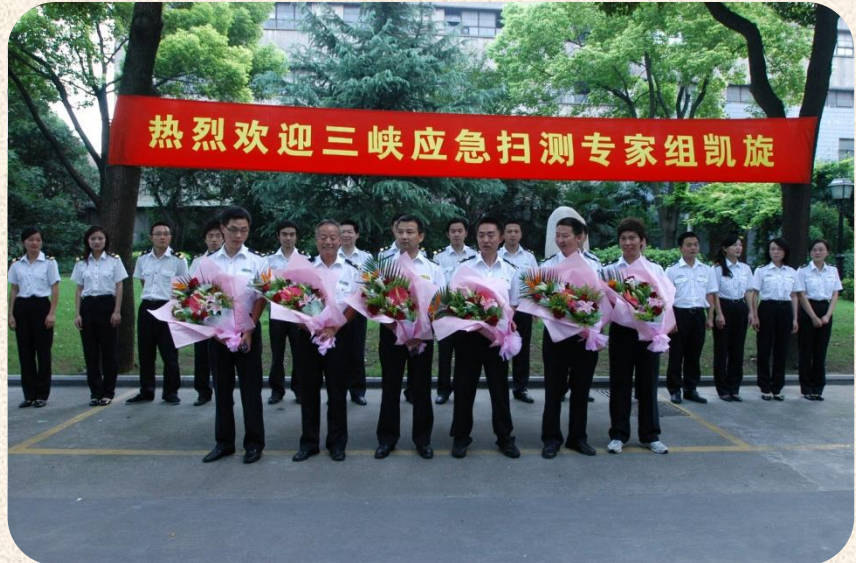
On February 10th, 2005, B -2116 helicopter hired by Shanghai Point Station crashed with a ship and fell into the channel at the mouth of Yangtze river. The survey ship, equipment and experts were shortly assembled and reached to the site. With 30 hours' effort, accurate position of the crashed helicopter was determined, the helicopter was salvaged and the aircraft black box was found.

On August 10th, 2006, typhoon Saomai struck the coastal area of Fujian and Zhejiang provinces and caused great damages and property loss. China MSA urgently maneuvered its hydrographic team to the hit area to conduct sweep survey. As a result, a total of 28 km² were surveyed and about 150 doubtful points of wrecks were found, providing reliable technical support for salvage of sunken ships. The quick response and capabilities of China MSA were highly appraised by the public.



Three Gorges of Yangtze River Emergency Survey

On August 10th, 2009, when a container ship M/V “Hanglong 518” was sailing on shipai waters around Three Gorges of Yangtze River, 62 containers fell into the water and some of which are dangerous chemical containers. The emergency team conducted sweep survey immediately, at last, the position of 18 containers were determined and 68 doubt points were eliminated.



Emergency survey for 2010 World Expo

On the evening of April 24, 2010, World Expo opened soon, a container ship, "Xiang Zhangjiajie 0996" berthing at Expo core waters near HuangPu River was sunk and 22 containers fell into the river. The emergency team of China MSA rushed to the site, and the position of 22 water containers and 4 combustible gas cylinders were sweep surveyed, which assisting the safe and efficient accident disposal, eliminating safety hidden for Expo waters.



Participating in Search and Rescue for Malaysia Airlines Flight MH370

At 2:40 am of March 8th 2014, Malaysia Airlines flight MH370 lost contact with ground control. China MSA immediately launched response to conduct search and rescue work. M/V “Haixun 01” and M/V “Haixun 31” were sent to implement search and rescue mission for the lost flight. “Haixun 01” swept across the northern and southern hemispheres and crossed 66 latitudes, which lasted 157 days with a range of more than 20,000 miles and an area of 245,000 km². “Haixun 31” set off from the South China Sea to the Thailand Gulf , the Strait of Malacca , Andaman Sea , north and east area of the southern Indian Ocean, Melon Wow Sea and other places , which lasted 54 days with a range of more than 10,000 miles and area nearly 130,000 km².

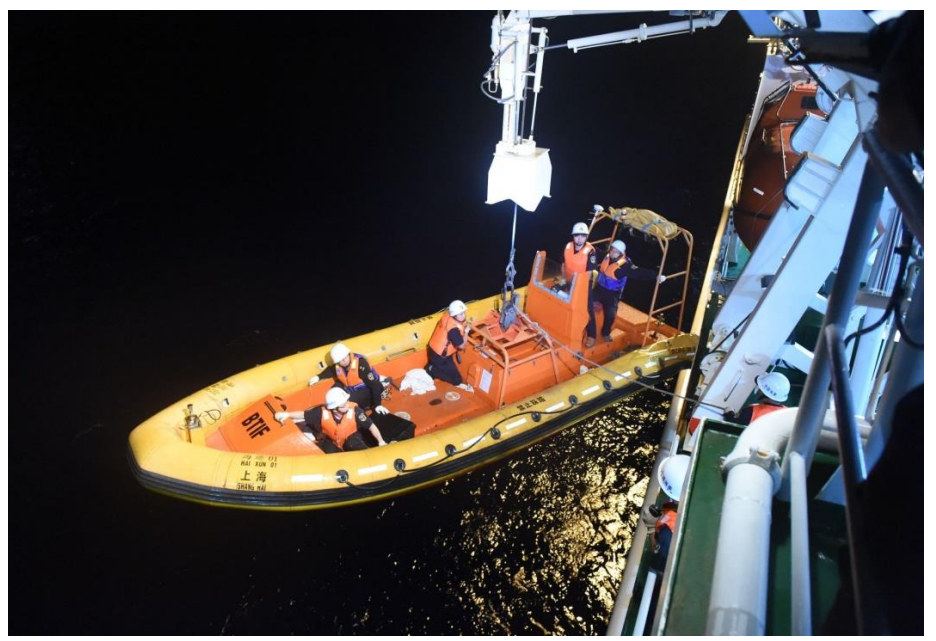
CHINA MSA



US Dept of State Geographer
© 2014 Google
Image Landsat
Data SIO, NOAA, U.S. Navy, NGA, GEBCO

Google earth

CHINA MSA



International Cooperation

Hydrographic survey has played an fundamental role in maritime search and rescue, and China MSA believe that it is very importance to carry out international cooperation to improve the overall emergency surveying capability.

SAR Operational Level Meeting



In 2012, a ship of China MSA visited America and conducted joint SAR.



In 2013, a ship of China MSA visited Indonesia, Burma, Malaysia and conducted joint search and rescue exercise.



SAR for Vietnam Fishing Boat in South China Sea



Sino Russian joint exercises in 2015

On August 26th 2015 , “Sino Russian joint exercises in 2015” held in the port waters between Heihe and Bulageweishensike. The exercise is organized by the Heihe Municipal People's government, the Heihe MSA, the Russian Bulageweishensike government, the Russian Amur emergency Bureau. The exercise includes three subjects, which are human life rescue, fire fighting and diving detection. More than 200 people and 22 ships which come from China and Russia participate in exercise.

PLANNING

Strengthen infrastructure construction, improve emergency management and operation system;

Strengthen construction of emergency ability, advancing troops and equipment standardization;

Strengthen system construction, promote the scientific decision-making and command;

Consolidate international hydrographic emergency cooperation mechanism with the relevant countries and regions.



Thank you for your attention!