

Gemini. The sign of Gemini symbolizes unity and strength of united action. Gemini is one of the twelve signs of the Zodiac and its two brightest stars are Castor (Alpha Geminorum) and Pollux (Beta Geminorum). In Indonesia (Southern Hemisphere) from January to May, these two stars are visible about 2000 hours in the northwestern part of the sky; and Indonesian traditional sailors use them as a guidance for sailing. The Indonesian hydrographic office has chosen "Dewa Kember" as the name for ex-HMS HYDRA. This is the second Indonesian hydrographic survey ship named Dewa Kember, the first one being an Indonesian hydrographic ship which was decommissioned in 1966.

NEW SURVEY SHIP OF THE HYDROGRAPHIC DEPARTMENT OF JAPAN

The new Survey Vessel **TENYO** joined the fleet of the Hydrographic Department of Japan on 27 November 1986. Her particulars are as follows:

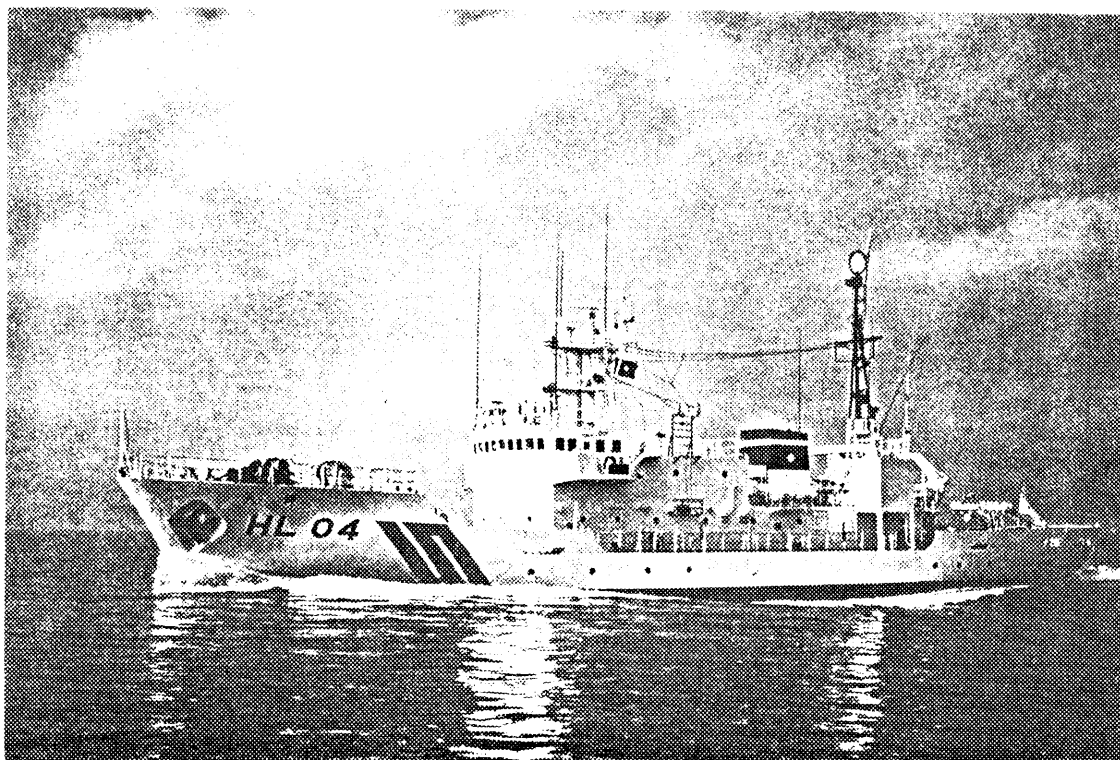
- Length overall : 56.0m
- Designed lead draft moulded : 2.9m
- Breadth moulded : 9.8m
- Depth moulded : 5.0m
- Gross tonnage : 430 tons
- Service speed : 13 knots
- Cruising range : 5,400 nautical miles
- Accommodation : 38 persons (including 24 officers and crew)

The principal survey equipment on board are:

- Hybrid positioning system
- Narrow multi-beam echo sounder (HYDROCHART)
- Medium-deep water echo sounder (maximum sounding depth : 5,000m)
- Acoustic Doppler current meter
- Automated data logging and processing system

She carries a survey launch on board, whose particulars are as follows:

- Hull material : FRP
- Length overall : 9.0m
- Breadth moulded : 2.25m
- Depth moulded : 1.1m
- Gross tonnage : 3 tons
- Speed : 8 knots
- Maximum accommodation : 10 persons



Survey Vessel "TENYO"

<> <> <>