

NEW SATELLITE GEODESY OFFICE OF H.D. JAPAN

The Japanese first geodetic satellite, which was introduced in the EAHC Newsletter No. 4, was successfully put in orbit on 13 August 1986. In order to proceed with the geodetic satellite observation, the Hydrographic Department of Japan has recently set up a new structure 'Satellite Geodesy Office', headed by Mr. Yoshio KUBO, for conducting necessary operations and services effectively.

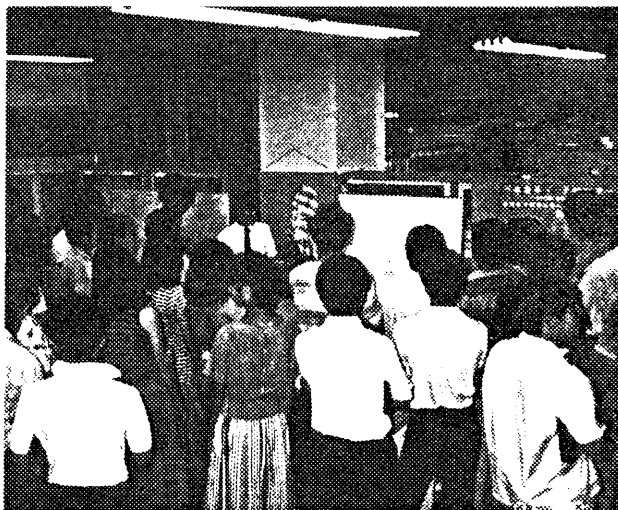
The new office is responsible for collecting and analyzing satellite observation data to be obtained at observation stations not only in Japan but also in various countries, and the most important task assigned to the office is to make predictions of the satellite orbit and calculate the actual orbiting path for the accurate laser ranging to the satellite, whose orbit is not stable because of various turbulence factors.

In 1987 when a transportable laser ranging system will become available, the simultaneous observation of the satellite will start at primary stations situated at off-lying islands and Mainland Station located at Simosato Hydrographic Observatory.

It is expected that this geodetic survey project will take a great step forward to promote the marine geodetic network of Japan.

MARINE DATA AND INFORMATION SERVICE CORNER OF JODC

The Hydrographic Department of Japan has recently opened a 'Marine Data and Information Service Corner' as one of the JODC activities. This service corner, headed by Mr. Kunio SAIKI, is open to the people who are interested in and seeking advice on marine science such as hydrography, oceanography, geophysics. The corner provides those people



Students calling at the Service Corner