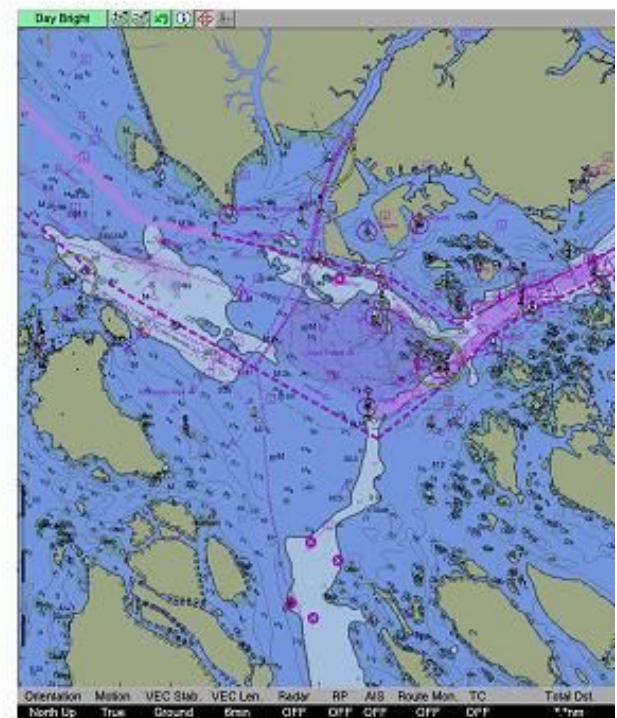


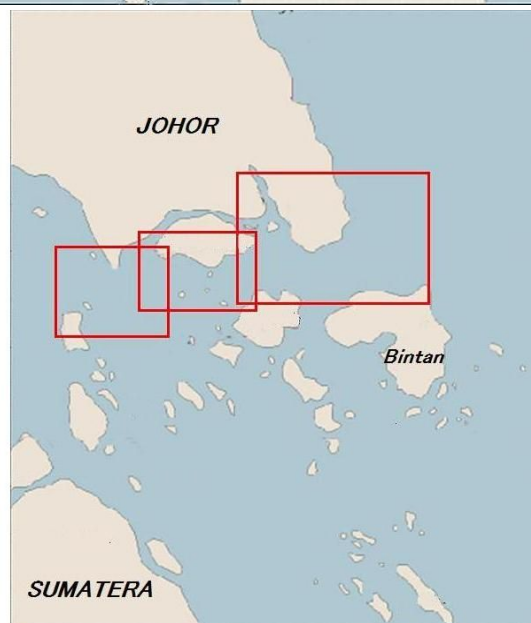
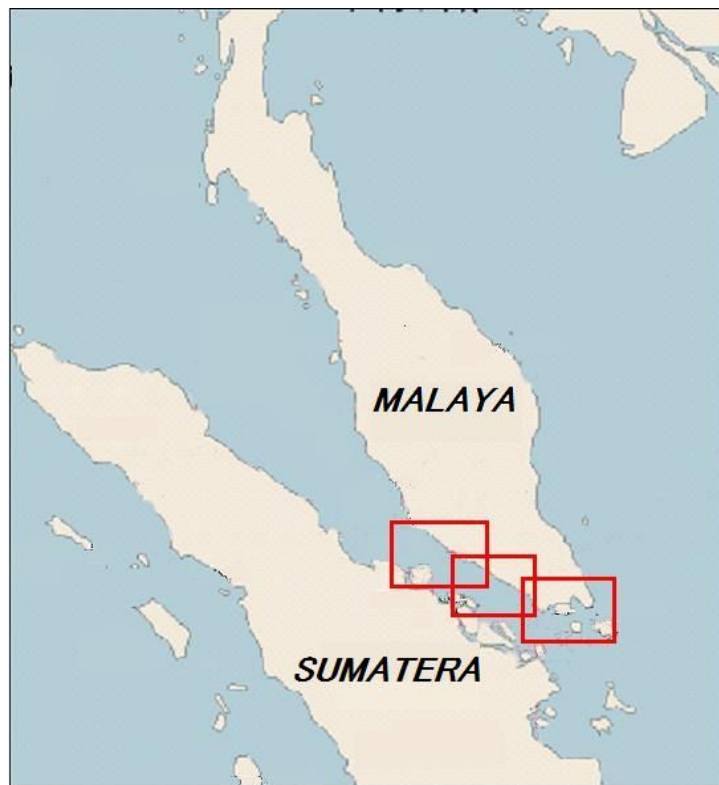
The official Malacca and Singapore Straits Electronic Navigational Chart

The Hydrographic Offices (HOs) of the three littoral states, namely Indonesia, Malaysia and Singapore, of the Malacca and Singapore Straits, together with Japan Hydrographic and Oceanographic Department (JHOD), jointly announced the commercial release of official Malacca and Singapore Straits Electronic Navigational Charts (MSS ENC) on 20 December 2005.



The MSS ENC consists of six cells covering west of Port Kelang, Malaysia, Riau waters of Indonesia, and to the eastern entrance of the Singapore Strait. The first official MSS ENC was jointly produced by the HOs of the three littoral states. The successful ENC production was also achieved through the technical cooperation of the Hydrographic and Oceanographic Department of Japan Coast Guard and supported by the Government of Japan, Japan International Cooperation Agency (JICA), the Nippon Foundation and so on.

The official MSS ENC conforms to the International Hydrographic Organization (IHO) specifications. The MSS ENC used together with ECDIS is recognized as paper chart equivalent which meets the carriage requirements of the SOLAS Convention (Chapter V/20).



It is expected that the official MSS ENC will serve the navigations to be smooth continuous passage in one of the world's busiest shipping routes between Indian Ocean and the South China Sea. It is also hoped that the MSS ENC will serve as a useful root for safer and more economical navigation through this busy waterways, so as to further minimize shipping casualties and for the protection of the marine environment. The MSS ENC has been sold by the HOs of Indonesia, Malaysia, Singapore and Japan Hydrographic Association(JHA) through their respective appointed distributors and sales agents since 26 December 2005.

Reported by Tomotaka ITO(JAPAN)