

## TRAINING NEWS

### GROUP TRAINING COURSE IN HYDROGRAPHIC SURVEY, 1995

#### FIELD TRAINING OF SOUNDING IN IMABARI PORT

After a 2-month lectures and classroom assignments, 10 participants of this course were exposed to the field training of sounding operations carried out in Imabari Port facing on the Seto Inland Sea from 7 to 24 June 1995.

Instructed by the skillful teacher Mr. Kokuta, Senior Coastal Surveys Officer of JHD, and his assistants, the participants practiced survey training in Imabari Port such as Control Point Survey, Automatic Data Logging System, Side Scan Sonar, Tidal Observation and Leveling.

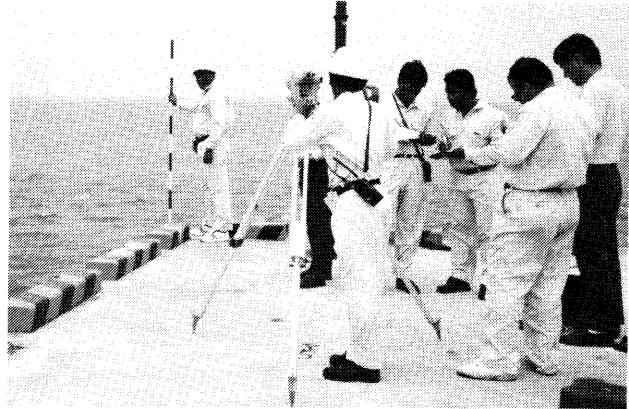
Helped by the fine weather, every subject of this training was conducted smoothly as scheduled.

#### VISITING TOUR TO GSI & GSJ, JAPAN

The visiting tour for the participants of this course to the Geological Survey of Japan (GSJ) and the Geographical Survey Institute (GSI) in Tsukuba Science City, was carried out on 26 and 27 July 1995.

The activities of the GSJ in the field of geology, mineral and fuel resources, geophysics, geochemistry, computers and earth science were explained precisely, and the 10 participants observed the Geological Museum of GSJ with modern exhibition facilities and valuable specimens of minerals, fossils and rocks. In GSI, after general explanation of work in the Institute, the course members visited four facilities. One is for a computer aided cartography system to digitize the maps from aerial photographs.

A scene of Field Training, Imabari Port



The next is the Earth Observation Data Analysis System with use of remote sensing data from satellites. The images made from digital data are used to watch environment of the earth and conservation of natural land.

The third one is the newly installed Processing and Analysis Center for GPS data. A part of activities to real time processing of data received from 610 GPS ground facilities to detect crustal movements and to contribute to prediction of earthquakes was on work in the Center.

The final visit is to printing facilities for topographic maps. Participants were impressed by high technologies in the institute and left Tsukuba for Tokyo.

Course participants at Geological Museum of GSJ



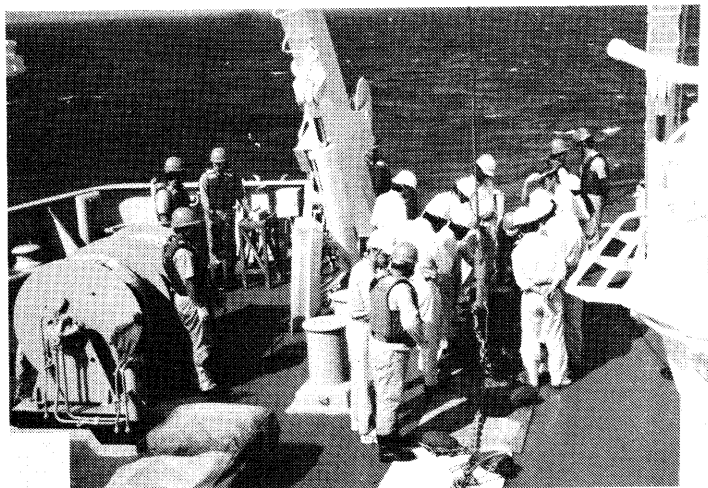
From left Staff of GSI  
 Mr. Arief SYAFI'I (Indonesia)  
 Mr. BUTT (Pakistan)  
 Ms. ABEYSURIYA (Sri Lanka)  
 Mr. VENTIREZ (Philippines)  
 Mr. SURYO (Indonesia)  
 Mr. RAHIM (Bangladesh)  
 Mr. JANTAN (Malaysia)  
 Mr. VEIKAUYAKI (Fiji)  
 Mr. KIM (Korea)

## PRACTICAL TRAINING ON BOARD S/V TAKUYO

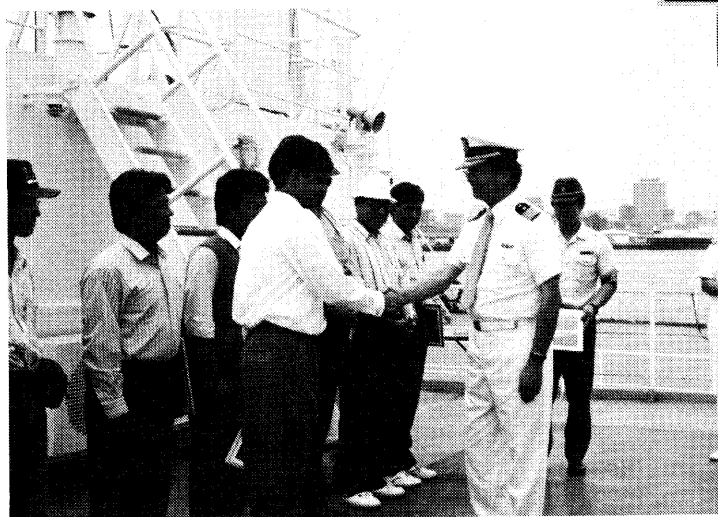
The participants of this course practiced training aboard the Survey Vessel TAKUYO from 9 to 11 August 1995.

They traveled to Shimizu City, Shizuoka Prefecture on 8 August and visited the Shimizu Maritime Safety Office for a courtesy call on the Director of the office.

Their visit was pictured and interviewed by several local newspapers and TV. Then, the participants talked about their hopes to the on-board training to the reporters. The visit was reported in the local morning papers and TV news for Shizuoka Prefecture on 9 August.



Practice on Bottom Sampling



Disembarking Ceremony

The S/V TAKUYO departed from Shimizu Port at 12:00 on 9 August as scheduled. Although Mt. Fuji, located near Shimizu City was not observed as it was wrapped in a mist, the weather was fine and the water was calm. The participants were explained about various survey equipment on the vessel and practiced position fixing, bathymetric survey with Echo Sounder, bottom and sub-bottom profiling with Seismic Profiler and Sub-bottom Profiler, Seismic Profiler using Air Gun, and so on.

All of the participants enjoyed this valuable voyage until they returned to Tokyo Port on 11 August and nobody had a seasickness.

### **GROUP TRAINING COURSE IN NAUTICAL CHARTING, 1995**

The JICA Group Training Course in Nautical Charting for the Japanese fiscal year 1995 is scheduled to take place at Hydrographic Department of Japan, from 16 November 1995 to 22 March 1996.

The "General Information (G.I.)" brochure which gives information on its curriculum, program, application procedures, etc. on the course, was forwarded through diplomatic channels, to certain 10 countries: Bangladesh, China, Costa Rica, Fiji, Indonesia, Korea, Malaysia, Pakistan, Philippines, and Sri Lanka, which have previously expressed their needs in sending participants to the course.

### **JICA INDIVIDUAL TRAINING IN NOTICES TO MARINERS, 1995**

An individual training in Notices to Mariners is now conducting at the Hydrographic Department of Japan (JHD), for Ms. Liza B. Bombais, Section Chief, Notice to Mariners, Coast and Geodetic Survey Department (CGSD), National Mapping and Resource Information Authority (NAMRIA), Philippines, from 18 September to 2 December 1995.

This training is arranged and sponsored by Japan International Cooperation Agency (JICA) and is now conducted as part of JICA scheme in the counterpart training in Japan for those who are currently assigned as counterparts of JICA experts dispatched to their countries.

Ms. Liza is a counterpart assigned to Mr. H. Shiroma, Notices to Mariners Officer of JHD, who worked for NAMRIA for 2 years until 3 August this year.

During her stay in Japan, she will participate in on-the-job training and many lectures on Notices to Mariners.