

J.H.D. PUBLISHED A PRECISE BATHYMETRIC CHART

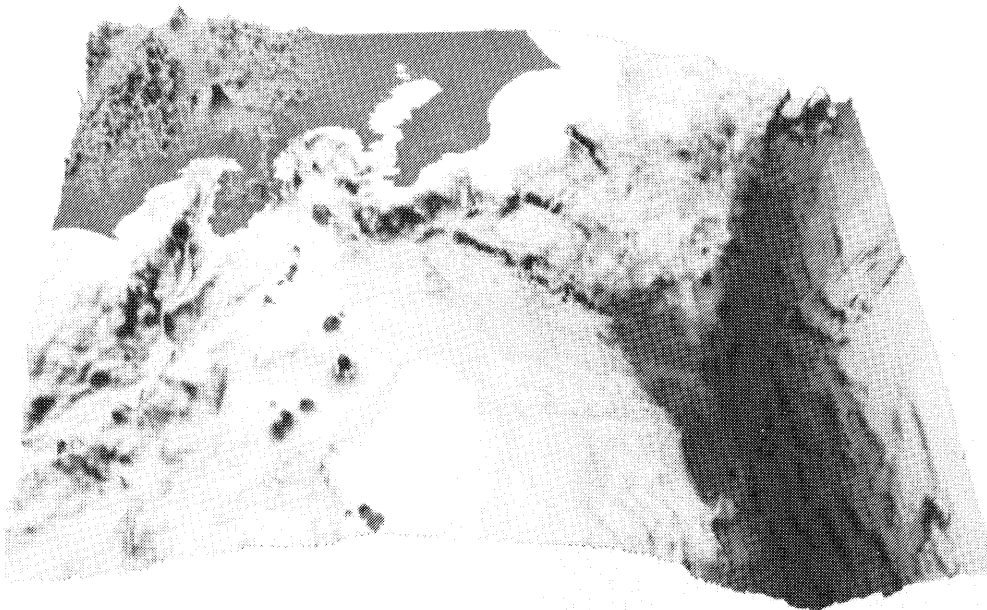
On 26 August 1994 the Hydrographic Department of Japan published a precise bathymetric chart, accompanied with a computer graphic 3-D chart, covering certain areas off Boso and Izu, S coast of Japan, at a scale of 1/500,000.

The bathymetric chart, which was compiled mainly by using the narrow multi-beam echo sounding data obtained for the past ten years, clearly shows that the ternary plates, the Pacific, Philippine Sea and Eurasian plates, are colliding with each other, the Pacific and Philippine Sea plates subducting beneath the Northeast Japan plate at the offing of Boso Peninsula, and Izu Peninsula is lying in between two troughs,

Sagami Trough and Suruga Trough.

The area covered is noted as a hotbed of earthquakes. The publication of such a bathymetric chart prepared based on the detailed survey has long been awaited among geologists, geophysists and other scientists for their study and research on earthquake mechanism, Tsunami prediction, marine environmental management, and other scientific activities.

The bathymetric chart on the scale of 1/500,000 is now made available for the public through the Japan Hydrographic Association.



CG 3-D chart
showing the sea floor

