

## J.H.D. CARTOGRAPHY OFFICE NEWLY ESTABLISHED

A new Cartography Office was established in the Coastal Surveys and Cartography Division, Hydrographic Department of Japan as of 24 June 1994, in accordance with the approval of the legislative and financial authorities concerned.

The new office, headed by Mr. Tadao Tatsuno, is composed of seven sections: Planning, Compilation, Drafting, Updating, Electronic Navigational Chart (ENC), Digital Compilation, and Proofreading Sections. The Planning, Compilation, Drafting and Proofreading Sections, which form a core of the office, are engaged in traditional cartographic work as before, while Updating Section transferred from Notices to Mariners Division, and ENC and Digital Compilation Sections are newly established as a new wing.

The new era of nautical charting with electronic technology involves two aspects; one is on the users' side and the other on the suppliers' side. On the users' side, ECDIS will become available in a few years, and therefore JHD, as the supplier, has to prepare ENC's for the ECDIS users.

In preparation of ENC's, hardware and software as well as the human power with skilled cartographers are vital and indispensable. The necessary machines include digitizers, scanners, workstations and plotters. Software is also necessary for data handling of input, output, and processing. Digital data files are made from printed paper charts. Skilled human power activates these resources and will produce final products of ENC's.

On the supplier side, conventional paper charts will also be produced by electronic data processing henceforth. The data base for ENC will be used for this purpose.

Now that the ENC production has just started in JHD, it is expected that the East Asian Seminar on ENC Technology scheduled to be held in Tokyo in November 1994 will facilitate and promote to sharing views and information on the development of electronic charts as well as mutual understanding and cooperation among hydrographic offices in our East Asian region.

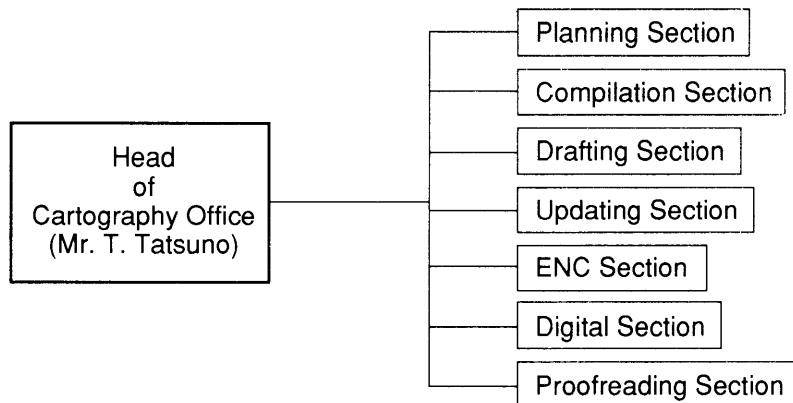


Chart data processing  
by workstations