

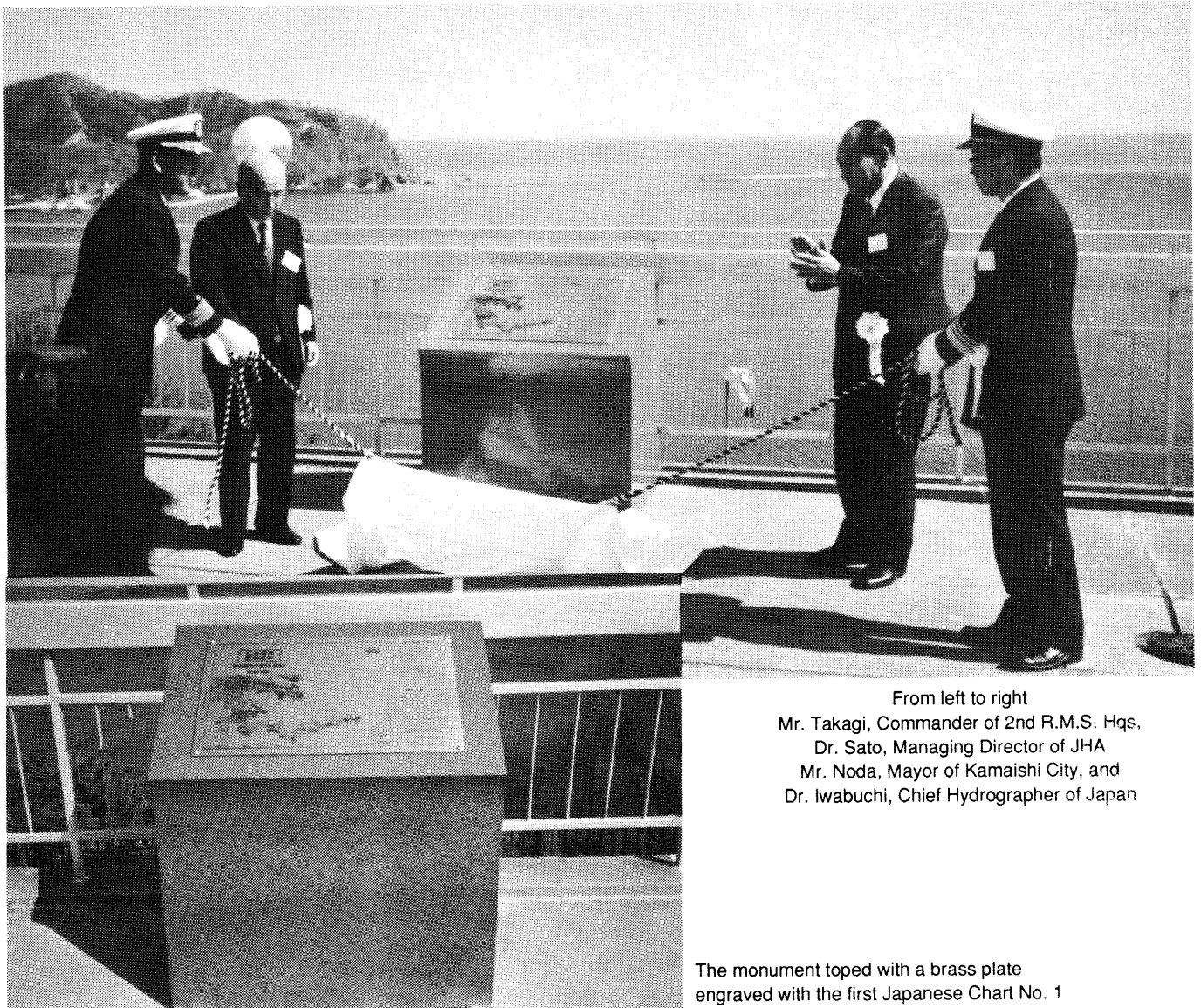
A MONUMENT IN MEMORY OF FIRST JAPANESE NAUTICAL CHART NO. 1

A monument with a replica of the first Japanese Nautical Chart No. 1 "Kamaishi Bay" was erected on the hilltop where commands a panoramic view of Kamaishi Bay.

The monument topped with a brass plate engraved with the first Japanese chart, original of which was produced for the then first time by Japanese staff only and published in 1872, was unveiled by; Dr. Y. Iwabuchi, the then Chief Hydrographer of Japan, Mr. Takagi, Commander of 2nd Regional Maritime Safety Headquarters, Dr. T. Sato, Managing Director of Japan Hydrographic Association, and Mr. T. Noda, Mayor of Kamaishi City, on 18 March 1994.



Dr. Yoshio IWABUCHI, Chief Hydrographer of Japan



From left to right
Mr. Takagi, Commander of 2nd R.M.S. Hqs.
Dr. Sato, Managing Director of JHA
Mr. Noda, Mayor of Kamaishi City, and
Dr. Iwabuchi, Chief Hydrographer of Japan

The monument topped with a brass plate engraved with the first Japanese Chart No. 1